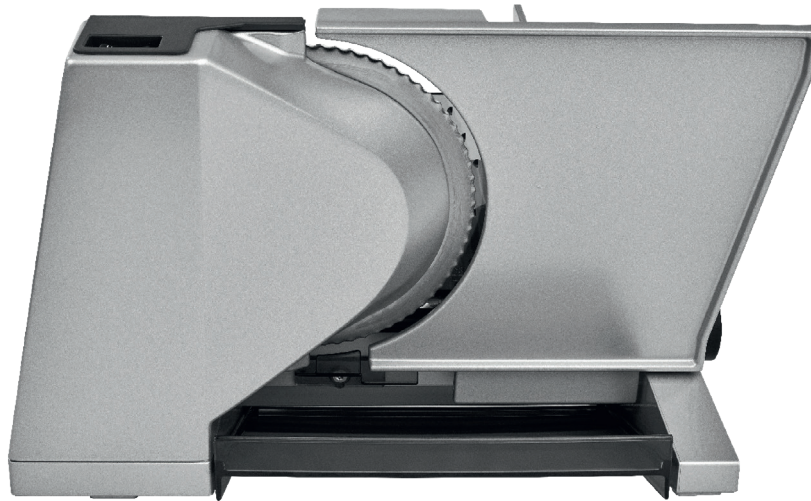




**MADE IN  
GERMANY**



## Electrical food slicer contura<sup>3</sup> selected design

### Details

- full metal construction, inclined
- silver metallic
- serrated circular blade, 17 cm Ø
- circular blade cover
- slice thickness adjustable up to approx. 23 mm
- safety switch for intermittent and continuous operation
- easy-going metal carriage – broad-surfaced and detachable
- carriage way approx. 24 cm
- food tray
- cable compartment
- warranty: 2 years\*
- product made in Germany

### Technical features

- 230 V, 65 Watt eco-motor, duty cycle 5 minutes
- VDE/GS, protection class 2, CE
- width 30.0 cm height 24.5 cm depth 39.0 cm
- weight: 4.4 kg

### Item-No. / GTIN

558.012 / 40 04822 55812 7

Subject to change without notice.

\*The 2-year manufacturer's warranty applies to all devices sold within the European Union. Your legal warranty claims according to § 437 ff. BGB (German Civil Code) remain unaffected by this regulation. You can view the warranty conditions at <https://www.ritterwerk.de/warranty>.

## Electrical food slicer contura<sup>3</sup> captivating design and practical functions

With its elegant silver and black look and its semi-professional form, the full metal food slicer contura<sup>3</sup> is a real eye-catcher in any kitchen. Alongside its exceptional appearance, it also captivates with its sophisticated technical functions. The 25-degree-inclination of the food holding plate offers an optimal and comfortable slicing position so that fresh bread, succulent ham or fresh vegetables can be sliced evenly without much effort.

The easy-going metal carriage allows a high level of user comfort while slicing. In addition, there is almost no limit to what can be sliced thanks to its broad-surfaced metal carriage. Even cleaning afterwards is no problem – the carriage can easily be unlocked and detached for this purpose.



With the food slicer contura<sup>3</sup>, it's easy to slice and prepare foods into even slices since the slicing thickness can be adjusted precisely from wafer-thin up to approx. 23 mm. The serrated circular blade, made from stainless steel, ensures the perfect "slice", achieving even better slicing results protected by the circular blade cover. The circular blade cover also increases safety while slicing. The food slicer can be used in intermittent and continuous operation as needed.

The contura<sup>3</sup> is driven by a 65 W eco motor which is 20 % more economical but nevertheless 50 % more powerful than the previous model.

Alongside its practical, technical functions, the food slicer contura<sup>3</sup> also captivates with its outstanding Bauhaus design. This was acknowledged with the red dot design award in 2008 and nomination for the German design prize in 2009.

High-quality materials and a perfect finish guarantee a long life span for the contura<sup>3</sup> – an ideal device for anyone who values classic design as well as "made in Germany" technology.

A smooth ham- and sausage circular blade is available for every ritter food slicer.



DESIGNPREIS  
2009  
NOMINEE



reddot design award  
winner 2008

