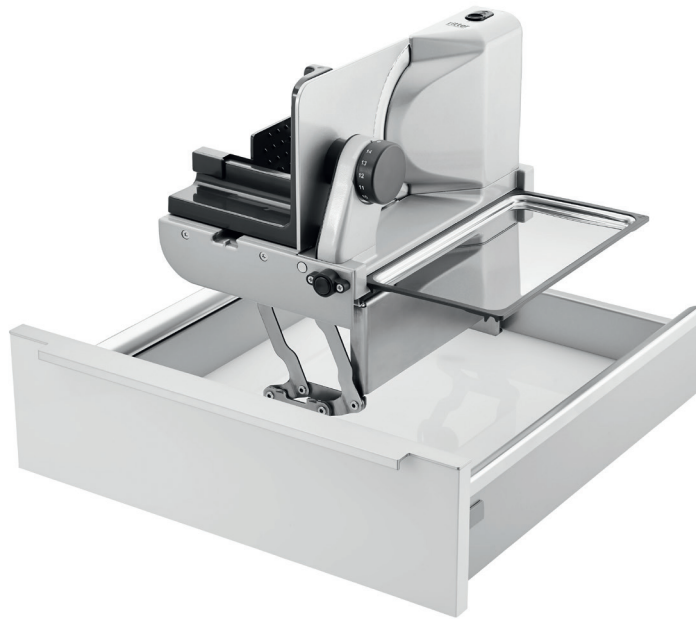


MADE IN  
GERMANY



## Built-in food slicer AES 62 SL-H

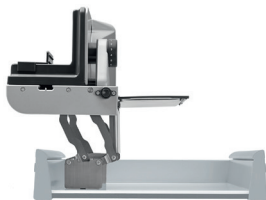
Modern and functional kitchen technology.

**for installation in standard drawers with a cabinet width of at least 50 cm. Left-handed operated with high mount**

prerequisite: clear width drawer > 392 mm  
Distance bottom of drawer to top of worktop min. 165 mm, max. 210 mm

Version with high mount e.g. for handleless kitchens, reinforced worktops etc.

This model is available to slice food on the right, as required (see also AES 62 SR-H)



### Features

- food sliced from left to right
- metal construction with high mount
- serrated circular blade, 17 cm Ø
- slice thickness adjustable up to approx. 14 mm
- safety switch for intermittent and continuous operation
- automatic folding lock when slice thickness is set
- food tray made of stainless steel
- holding device / bracket for finger protection and left-over holder
- folding up fixture locks automatically
- VDE/GS, protection class 2, CE
- 230 V, 65 W, duty cycle 5 min.
- weight 4.1 kg

### Dimensions

height: 75 mm width: 390 mm depth: 365 mm (folded)

### Optional

smooth ham- and sausage circular blade

### Warranty

5 years when purchased with a kitchen and installation by qualified personnel otherwise 2 years\*

### Item No. / GTIN

544.005 / 40 04822 54405 2

Technical data are subject to change

\*The 2-year manufacturer's warranty applies to all devices sold within the European Union. Your legal warranty claims according to § 437 ff. BGB (German Civil Code) remain unaffected by this regulation. You can view the warranty conditions at <https://www.ritterwerk.de/warranty>.